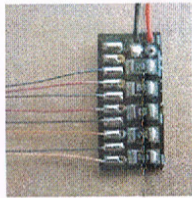
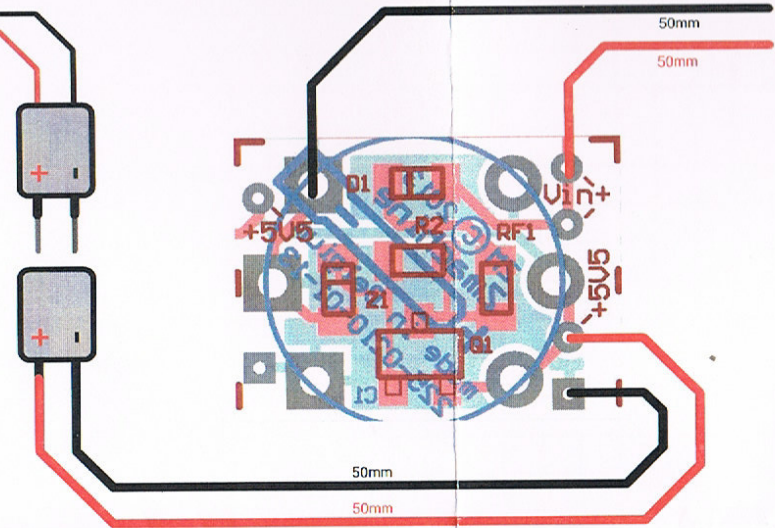
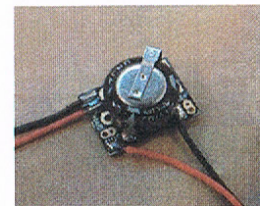


Power supply wires (have to be soldered to motor tags)



!!! CAUTION !!! SuperCap is polarized !!!



All square pads may be used as negative common (0 volt)

Model ZM260BPC

Features :

- * Reverse voltage & automatic resettable overcurrent protections.
- * Stabilized power head & tail lights (energy backup by 0.33F supercap)
- * Only 0.58 gr in the body w. male connector !!!
- * Very high brightness Xenon PLCC6 front leds.
- * Thin & flex power supply wires, ultra thin PU insulated led wiring.
- * Perfect fitting Lexan body slot cars class.
- * ID led's resistor already mounted.

Main characteristics :

In chassis dimensions : 14 x 10 x 6 mm max (w. supercap)
 In body dimensions : 14 x 6 x 1 mm max.
 Total weight : 2.25 gr (complete set w. one supercap, power wires & connectors set)
 Power supply : min 6.8 Vdc/ac - Max 25Vdc/ac (Davic compatible)
 Power consumption : Max 85mA peak - Max 29mA continuous (@12.8Vdc)
 Lighting backup time : on head > 2 minutes, on tail > 5 minutes.

R3 = 1K8, R4 & R5 = 1K2, R6 & R7 = 330R

Model ZM260BPC - P/N E225-0260-90-58

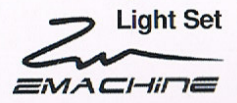
Parts list :

- 1 ea. Power PCB assy. ref# E225-0230-01-73 (cut)
- 1 ea. Ballast PCB assy. ref# E225-0240-01-06 (330R)
- 1 ea. Supercap 0.33F/5V5 ref# E225-0140-xx-xx
- 1 ea. Prewired Male/Female connector set ref# E225-xxxx-xx-xx
- 2 ea. PU Prewired Xenon white SMD PLCC6 leds ref# E225-0242-xx-xx
- 2 ea. PU Prewired Super red SMD 0805 leds ref# E225-0243-xx-xx

Rmk : Prewired leds & power supply cables already soldered on PCBs.

ZM260BPC

rev. 30/06/2016



<http://www.zmachine.be> - phl@zmachine.be - Zmachine Electric Motorsport